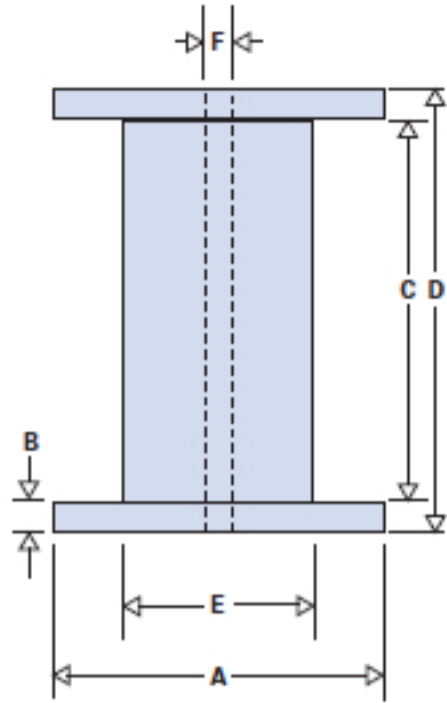
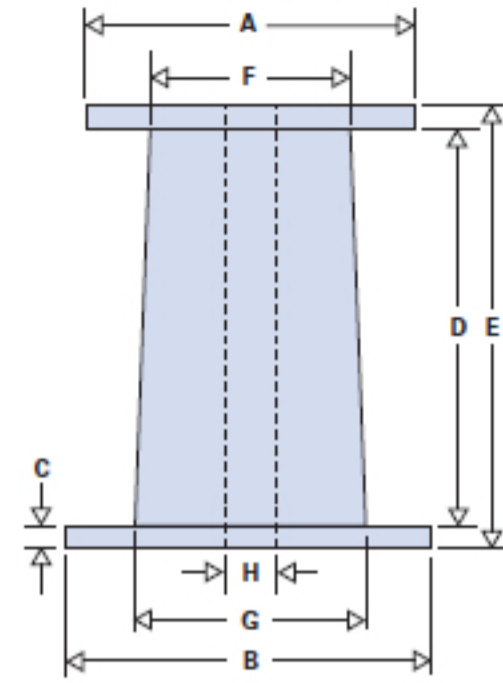


# Essex® Fine Wire Packaging Reference Guide

**Straight Flange / Barrel**



**Straight Flange / Tapered Barrel**



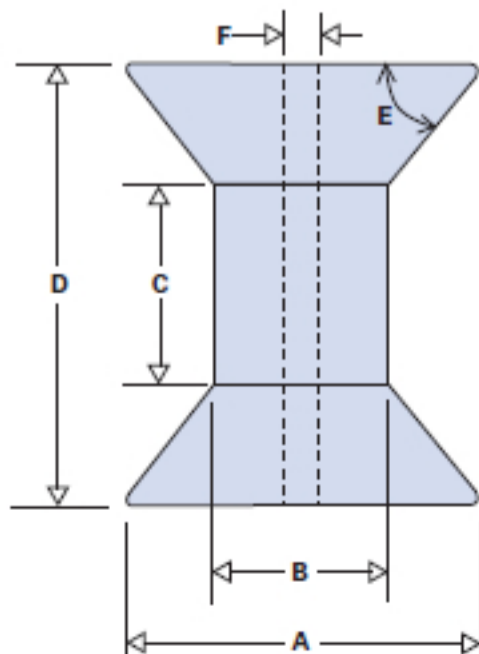
Package	Pkg Code	Package Design	Size - Copper	Size - Aluminum	Dimensions (inches)								Nom. Pounds Per Spool-Copper	Number of Spools/Reels Per Carton	Number of Containers per Pallet
					A	B	C	D	E	F	G	H			
DIN 125/45	07	Taper Flange/Straight Barrel	35-47	*	4.921	2.795	2.559	4.921	45°	0.630	-	-	4.5	8	15
6" x 3 1/2" Spool Box	06	Straight Flange/Barrel	28-47	*	6.000	0.408	3.500	4.32	3.500	0.630	-	-	8.5	6	30
6" x 3 1/2" Spool Bulk Pack	76	Straight Flange/Barrel	28-47	*	6.000	0.408	3.500	4.32	3.500	0.630	-	-	8.5	6	42
6" x 6" Spool Box	05	Straight Flange/Barrel	28-47	*	6.000	0.516	5.968	7	3.750	0.630	-	-	12.0	4	20
6" x 6" Spool Bulk Pack	75	Straight Flange/Barrel	28-47	*	6.000	0.516	5.968	7	3.750	0.630	-	-	12.0	6	30
DIN 160/45 Spool	10	Taper Flange/Straight Barrel	37-47	*	6.299	3.543	3.346	6.299	45°	0.630	-	-	13.5	4	30
DIN 200/45 Spool	11	Taper Flange/Straight Barrel	29-44	*	7.874	4.409	4.173	7.874	45°	0.630	-	-	23.0	2	18
HKL 200/22*	42	Taper Flange/Straight Barrel	*	*	7.874	4.4094	8.701	12.402	45°	0.866	-	-	35.0	1	12
8 1/2" x 9 1/4" Taper Reel	08	Straight Flange/Tapered Barrel	28-39	*	8.500	9.250	0.521	9.000	10.0625	5.500	6.500	1.531	40.0	1	16
DIN 250/45*	40	Taper Flange/Straight Barrel	*	*	9.843	5.512	5.236	9.843	45°	0.630	-	-	50.0	1	28
Taper Flange TF 80	13	Tapered Flange/Tapered Barrel	28-37	*	10.000	10.875	6.000	6.800	12.634	8.230	45°	1.531	75.0	1	12
Taper Flange TF 80 (Box)	81	Tapered Flange/Tapered Barrel	28-37	*	10.000	10.875	6.000	6.800	12.634	8.230	45°	1.531	75.0	1	12
Reel-Pak 250*	25	Straight Flange/Tapered Barrel	*	*	15.000	16.000	1.218	12.000	14.375	7.960	9.000	1.531	260.0	1	5

Essex has the capabilities to match spool weights to fit your application requirements.

\*Available upon special request, please consult Magnet Wire Marketing for more information.

Note: Aluminum nominal pounds per spool information available upon special request.

**Taper Flange / Straight Barrel**



**Tapered Flange / Tapered Barrel**

